

## About Us

Established  
in  
2019

Focusing on  
Intelligent Industry  
Robots

Professional  
and Strong  
Team

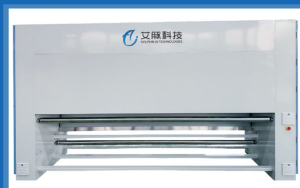
Involved in Automobile,  
Textiles, and Prefabricated  
Foods Industries

Dolphin AI Technologies Co., Ltd, an ecological enterprise of the listed company Century Huatong (002602), was founded in 2019, a high-tech enterprise dedicated to developing intelligent industry robots. Our mission is to address common challenges faced by manufacturing companies, such as labor shortages, inefficiencies and poor outcome, through AI technology.

Driven by values of innovation, excellence, and win-win with our customers, we conduct forward-looking research and high-end design for cutting-edge products and deploy intelligent robots across various manufacturing sectors. Our goal is to fulfill the customer demand and solve the pain points of industries, and help our clients reduce costs, enhance efficiency, and drive enterprise value and competitiveness.

With a strong and professional team composed of personnel with doctoral and master's degrees, Dolphin AI developed and grew rapidly. We excel in technology, product development, and business outreach. Our solutions, spanning automotive manufacturing, textiles, and prefabricated foods, have gained widespread acclaim for their effectiveness and value addition to our clients.

## Usage Scenario



### Initial inspection

Reducing the number of initial inspection personnel to 1 person/unit can improve the quality. Detect continuous defects such as spots and imprints, promptly repair them to avoid losses.



### Double inspection

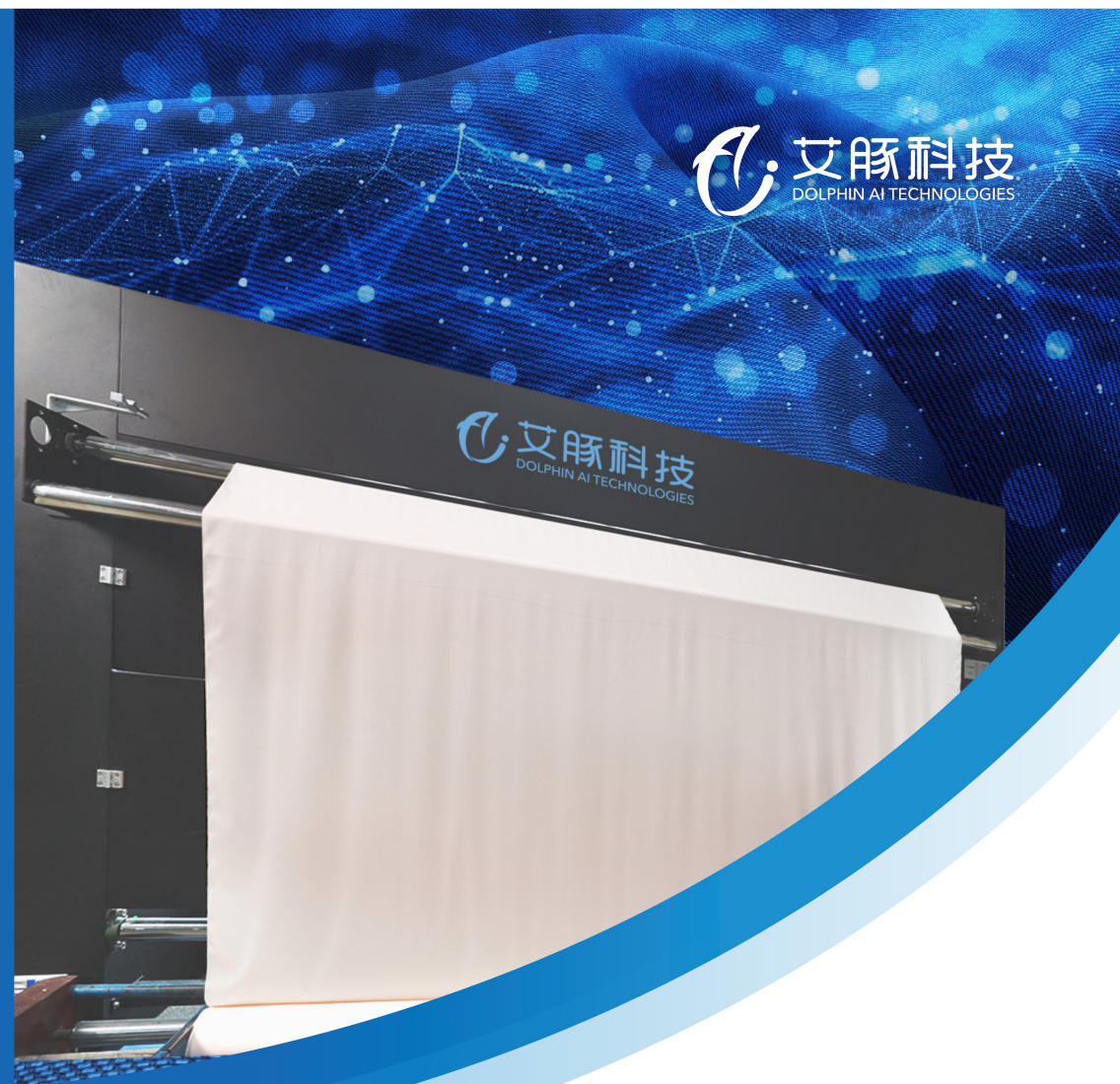
Efficiently and timely detect defects that were missed or repaired during the initial inspection of the fabric inspector, avoiding the leakage of defects.



### Incoming Inspection

Used for full inspection of incoming materials by finished product manufacturers, marking after inspection to improve production efficiency and reduce losses.

DOLPHIN AI TECHNOLOGIES



# AIBRI FABRIC INSPECTOR -PILOT WHALE DOLPHIN

A trustworthy fabric inspection expert

# AIBRI FABRIC INSPECTOR Pilot Whale Dolphin

An advanced intelligent device that can be widely used for fabric inspection.



## Product Introduction

For scenarios inspecting yarn, weaving, and dyeing defects in dyed fabrics, we incorporate massive dyeing defect data into our large inspection model, It can automatic, efficient, and accurate inspect defect, and make the mark at the selvage, enhancing finished product manufacturers' defect localization efficiency.

## Summary of Product

### Detect various defects in fabrics

- Support different materials, fabric structures and width of cloth.

### Detection rate far exceeds manual

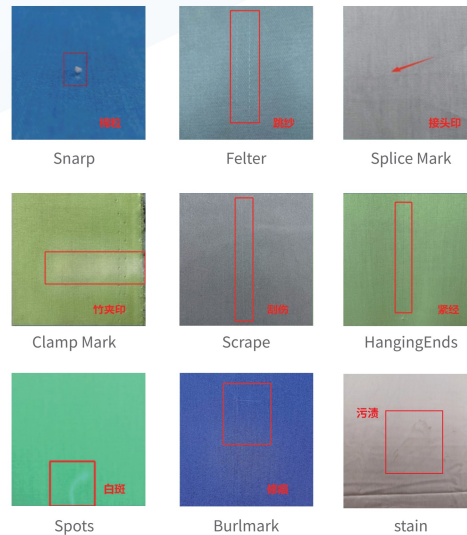
- High efficiency: detection efficiency reaches 60 m/min
- High quality: Less than 3 missed reports within 100 meters

### Flexible inspection standards

- The inspection standards can be set according to different rules and the requirements of different customers

### Reliable inspection reports

- Automatically mark at the selvage after detecting defects
- generate detailed reports as needed
- Provide external API to be integrated



## Product Advantages

There are hundreds of types of defects, including yarn defects, weaving defects, and dyeing defects.

It can replace 2-5 fabric inspectors per devices, significantly reducing labor and management costs for enterprises.

The detection accuracy is up to 0.2mm, with an accuracy rate of over 90%, greatly improving inspection efficiency.

SUPPORT ALL TYPES OF FABRICS

Support fabrics of different materials and textures, such as cotton fabric, synthetic fabric, plain weave fabric, twill fabric, satin weave fabric.

SUPPORT ALL TYPES OF DEFECTS

In addition to common widths, it also supports widths of 2.8 meters or more, which can meet various needs.

SUPPORTS A WIDE RANGE OF WIDTHS

HIGH RETURN ON INVESTMENT

The detection ability can reach up to 90%, is over 30% higher than that of senior fabric inspectors. On average, there are less than 3 missed reports per 100 meters.

HIGH DETECTION RATE

HIGH ACCURACY

## AIBRI vs Manual

Manual	VS	AIBRI FABRIC INSPECTOR
Average speed of 20-30 meters per minute	Speed	Up to 60 meters per minute
Due to the limited experience of the fabric inspector, it varies from person to person	Ability	The detection rate is much higher than that of skilled fabric inspectors
Fluctuations caused by emotional, physical, and fatigue levels	Stability	work steadily 24/7
The cost of labor is increasing year by year	Labor cost	can replace 2-5 fabric inspectors per devices, significantly reducing labor and management costs for enterprises.
Lack of standardized records, chaotic management of detection data, and lack of evidence to trace problems encountered	Data management	Automatically record and mark the defects, generate a defect map for defect trace, score defects according to inspection standards